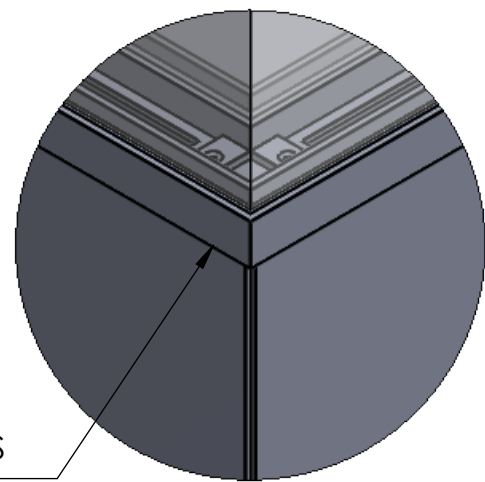


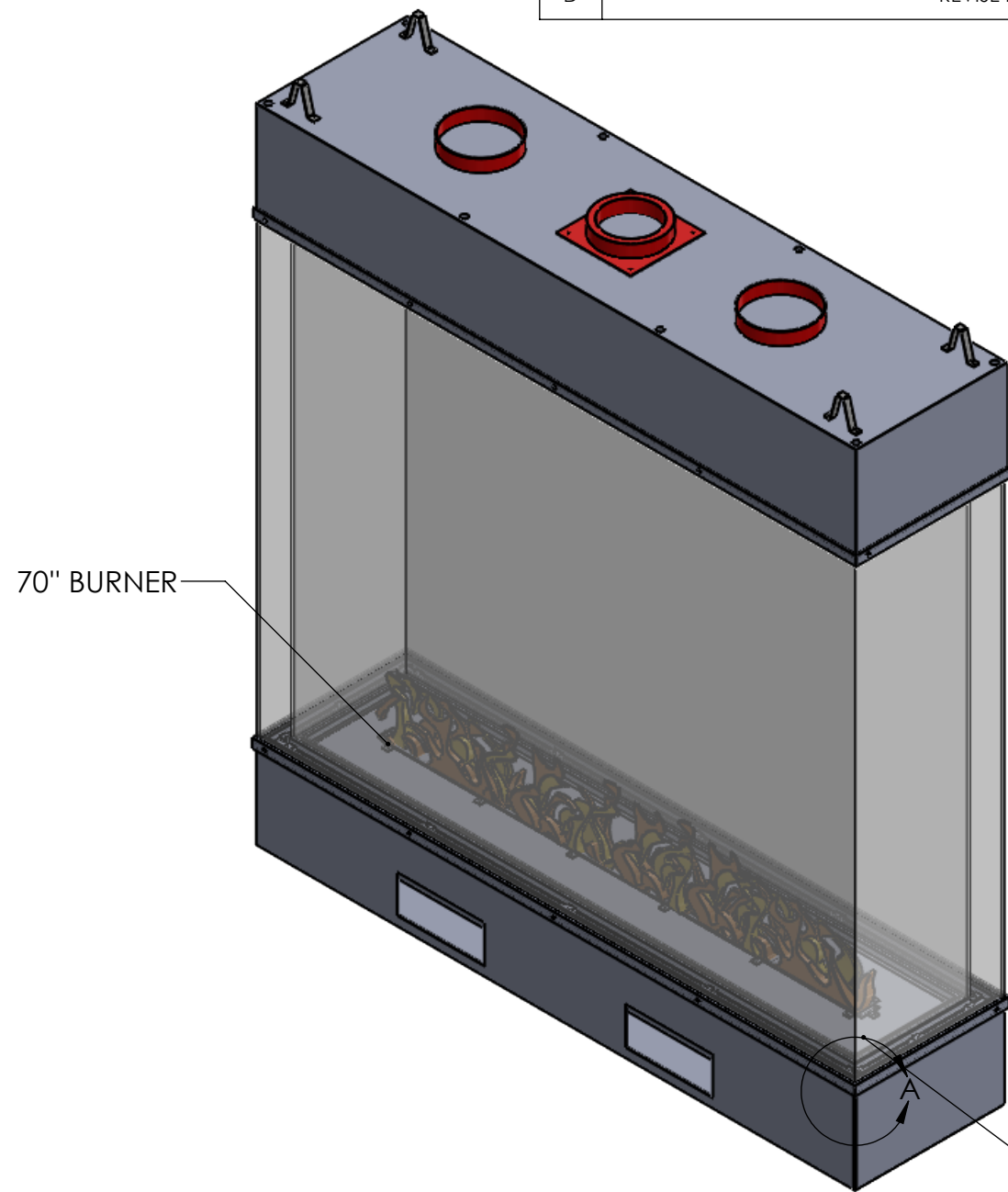
8 7 6 5 4 3 2 1

REVISIONS			
REV.	DESCRIPTION	ECO	DATE
A	INITIAL RELEASE	A.REDBERG	6/12/17
B	REVISE INTAKES	A.REDBERG	8/7/17
C	REVISE INTAKES	A.REDBERG	11/28/2017
D	REVISE BURNER	A.REDBERG	12/8/2017



FRAME OPTION 1  
WITHOUT COUNTERSUNK SCREWS  
ON FACE

DETAIL A  
SCALE 1 : 5




70" BURNER

MEDIA TRAY  
TO BE COVERED WITH  
1/4" CRUSHED GLASS MEDIA

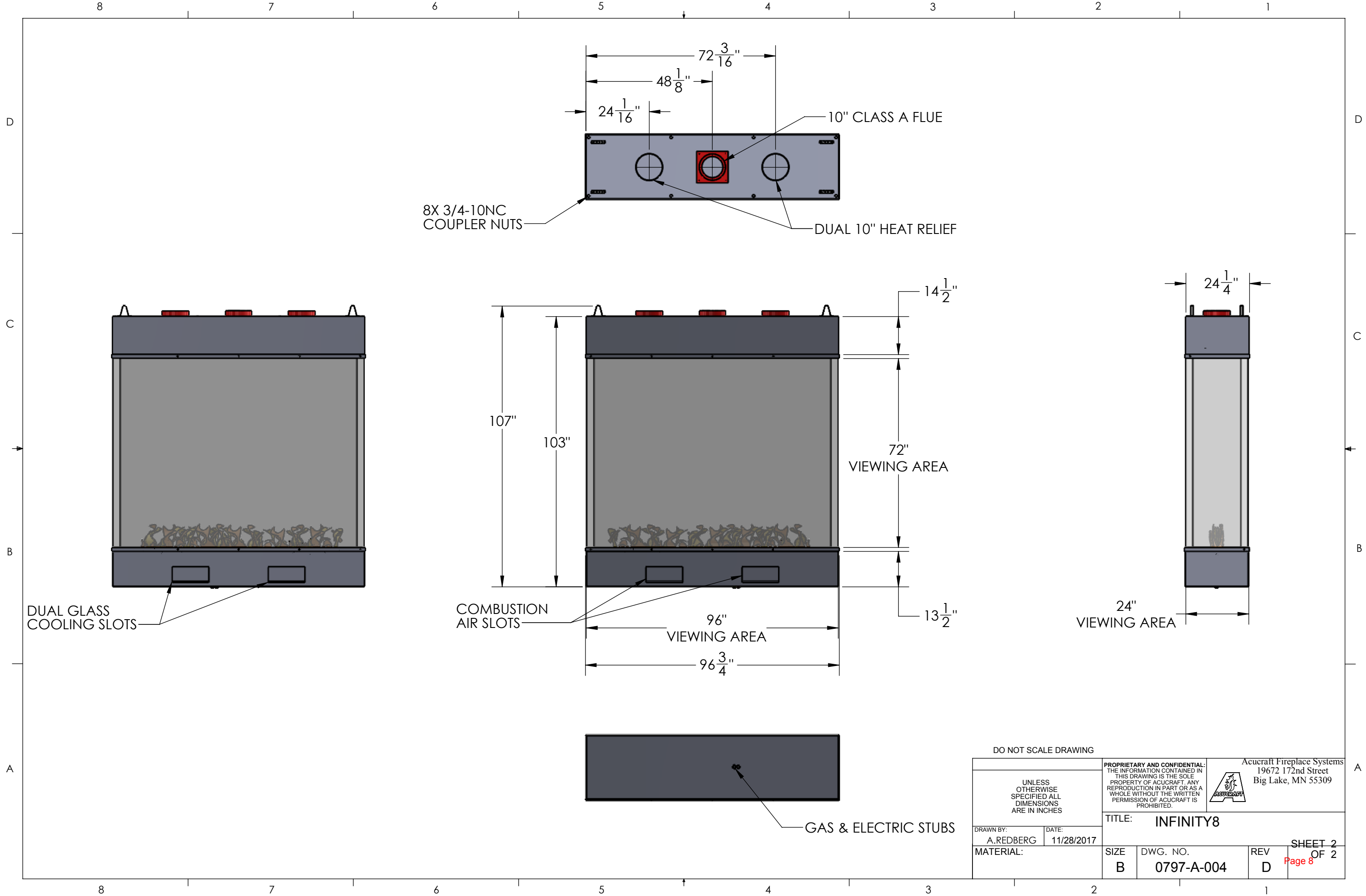
NOTES:

1. FIREPLACE HOOD TO BE SUPPORTED FROM ABOVE AS SPECIFIED ON DRAWING.
2. FINISH MATERIAL TO BE PROVIDED BY OTHERS
3. APPROXIMATE HOOD WEIGHT 1,000LBS
4. APPROXIMATE BTU 120,000
5. GAS TYPE NG
6. GLASS TO BE INSTALLED BY OTHERS

DO NOT SCALE DRAWING

UNLESS OTHERWISE SPECIFIED ALL DIMENSIONS ARE IN INCHES		<small>PROPRIETARY AND CONFIDENTIAL: THE INFORMATION CONTAINED IN THIS DRAWING IS THE SOLE PROPERTY OF ACUCRAFT. ANY REPRODUCTION IN PART OR AS A WHOLE WITHOUT THE WRITTEN PERMISSION OF ACUCRAFT IS PROHIBITED.</small>		 Acucraft Fireplace Systems 19672 172nd Street Big Lake, MN 55309	
		TITLE: <b>INFINITY8</b>			
DRAWN BY: A.REDBERG	DATE: 11/28/2017	SIZE <b>B</b>	DWG. NO. <b>0797-A-004</b>	REV <b>D</b>	SHEET 1 OF 2

8 7 6 5 4 3 2 1



DO NOT SCALE DRAWING

UNLESS OTHERWISE SPECIFIED ALL DIMENSIONS ARE IN INCHES		PROPRIETARY AND CONFIDENTIAL: THE INFORMATION CONTAINED IN THIS DRAWING IS THE SOLE PROPERTY OF ACUCRAFT. ANY REPRODUCTION IN PART OR AS A WHOLE WITHOUT THE WRITTEN PERMISSION OF ACUCRAFT IS PROHIBITED.		Acucraft Fireplace Systems 19672 172nd Street Big Lake, MN 55309	
DRAWN BY: A.REDBERG		DATE: 11/28/2017		TITLE: INFINITY8	
MATERIAL:		SIZE: B	DWG. NO.: 0797-A-004	REV: D	SHEET 2 OF 2 Page 8