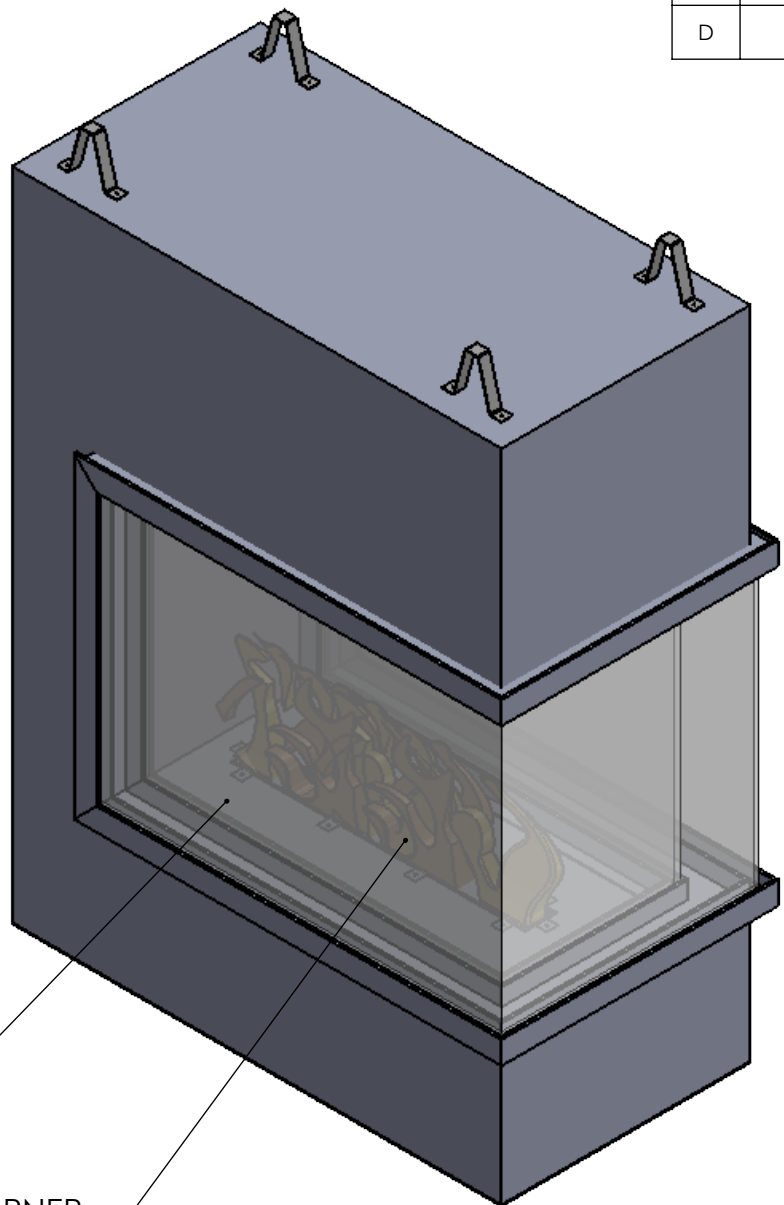


8 7 6 5 4 3 2 1

REVISIONS			
REV.	DESCRIPTION	ECO	DATE
A	INITIAL RELEASE	AR	5/24/2018
B	REVISED PER CUSTOMER REQUEST	AR	6/12/2018
C	REVISED INTAKE/EXHAUST LOCATIONS & REDUCED GLASS COOLING INTAKE/ EXHAUST DIAMETER	AR	6/26/2018
D	REVISE HEAT RELIEF AND FLUE LOCATIONS	AR	7/13/2018

D
C
B
A


D
C
B
A



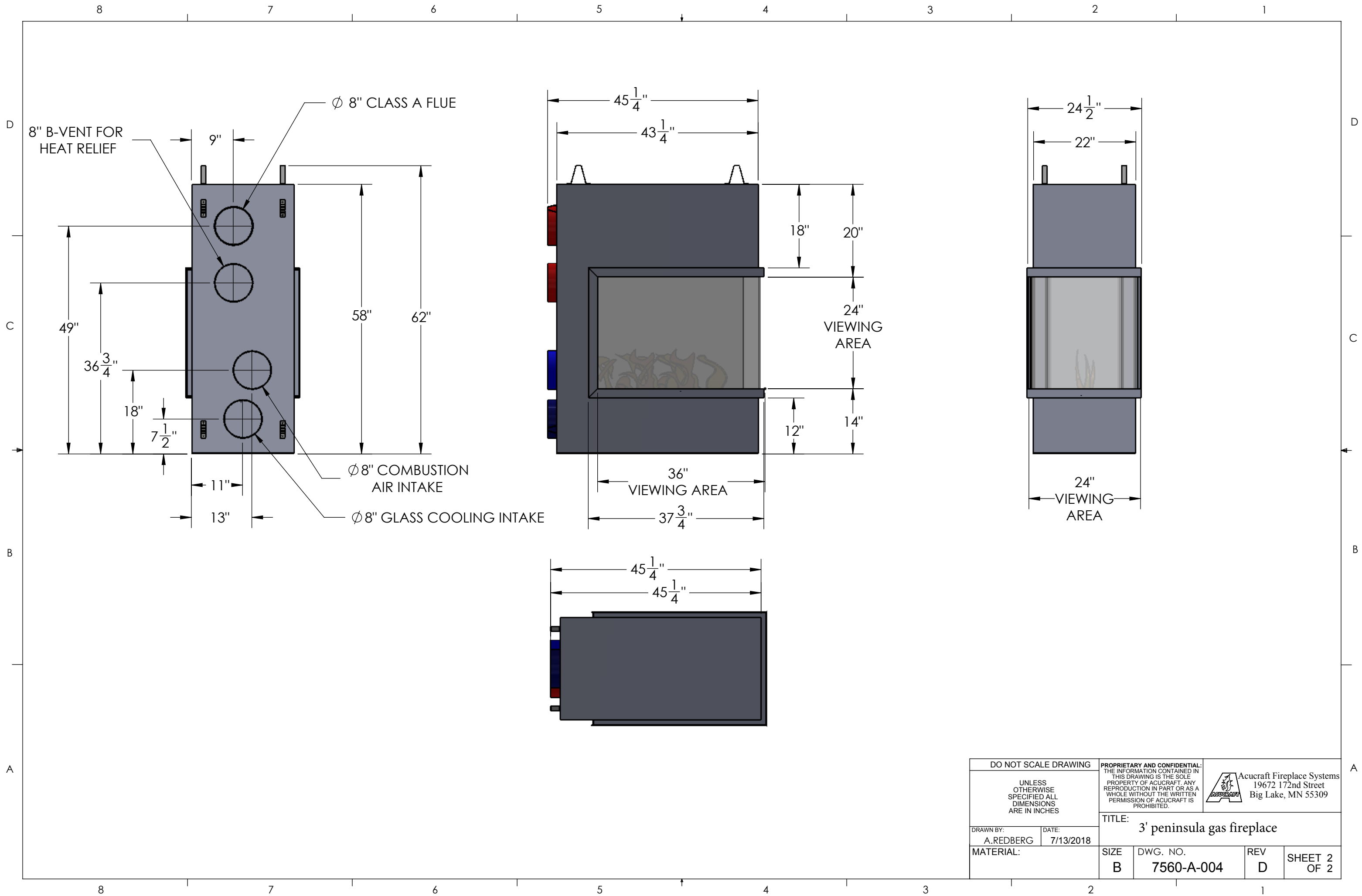
MESH TO BE COVERED WITH GLASS
MEDIA COLOR TO BE DETERMINED


24" BURNER

- NOTES:
1. ALL OVERALL DIMENSIONS +/- 1/4"
 2. FINISH MATERIAL TO BE PROVIDED BY OTHERS
 3. APPROXIMATE BTU: 32,000
 4. GAS TYPE: NATURAL GAS
 5. GLASS TO BE INSTALLED BY OTHERS

DO NOT SCALE DRAWING		<small>PROPRIETARY AND CONFIDENTIAL: THE INFORMATION CONTAINED IN THIS DRAWING IS THE SOLE PROPERTY OF ACUCRAFT. ANY REPRODUCTION IN PART OR AS A WHOLE WITHOUT THE WRITTEN PERMISSION OF ACUCRAFT IS PROHIBITED.</small>		 Acucraft Fireplace Systems 19672 172nd Street Big Lake, MN 55309
<small>UNLESS OTHERWISE SPECIFIED ALL DIMENSIONS ARE IN INCHES</small>		TITLE: 3' peninsula gas fireplace		
<small>DRAWN BY:</small> A.REDBERG	<small>DATE:</small> 7/13/2018	<small>SIZE</small> B	<small>DWG. NO.</small> 7560-A-004	<small>REV</small> D
<small>MATERIAL:</small>		<small>SHEET 1 OF 2</small>		

8 7 6 5 4 3 2 1



DO NOT SCALE DRAWING		PROPRIETARY AND CONFIDENTIAL: THE INFORMATION CONTAINED IN THIS DRAWING IS THE SOLE PROPERTY OF ACUCRAFT. ANY REPRODUCTION IN PART OR AS A WHOLE WITHOUT THE WRITTEN PERMISSION OF ACUCRAFT IS PROHIBITED.		 Acucraft Fireplace Systems 19672 172nd Street Big Lake, MN 55309
UNLESS OTHERWISE SPECIFIED ALL DIMENSIONS ARE IN INCHES		TITLE: 3' peninsula gas fireplace		
DRAWN BY: A.REDBERG	DATE: 7/13/2018	SIZE B	DWG. NO. 7560-A-004	REV D
MATERIAL:				SHEET 2 OF 2