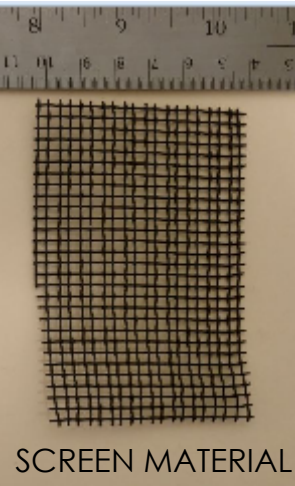


REVISIONS			
REV.	DESCRIPTION	ECO	DATE
A	INITIAL RELEASE	AR	4/13/2018
B	REVISED FIRESCREEN AND FRAMES	AR	6/15/2018



BACK WALL TO
RECEIVE MESH FOR FINISH MATERIAL


CORNER SUPPORTS IN FIRESCREEN

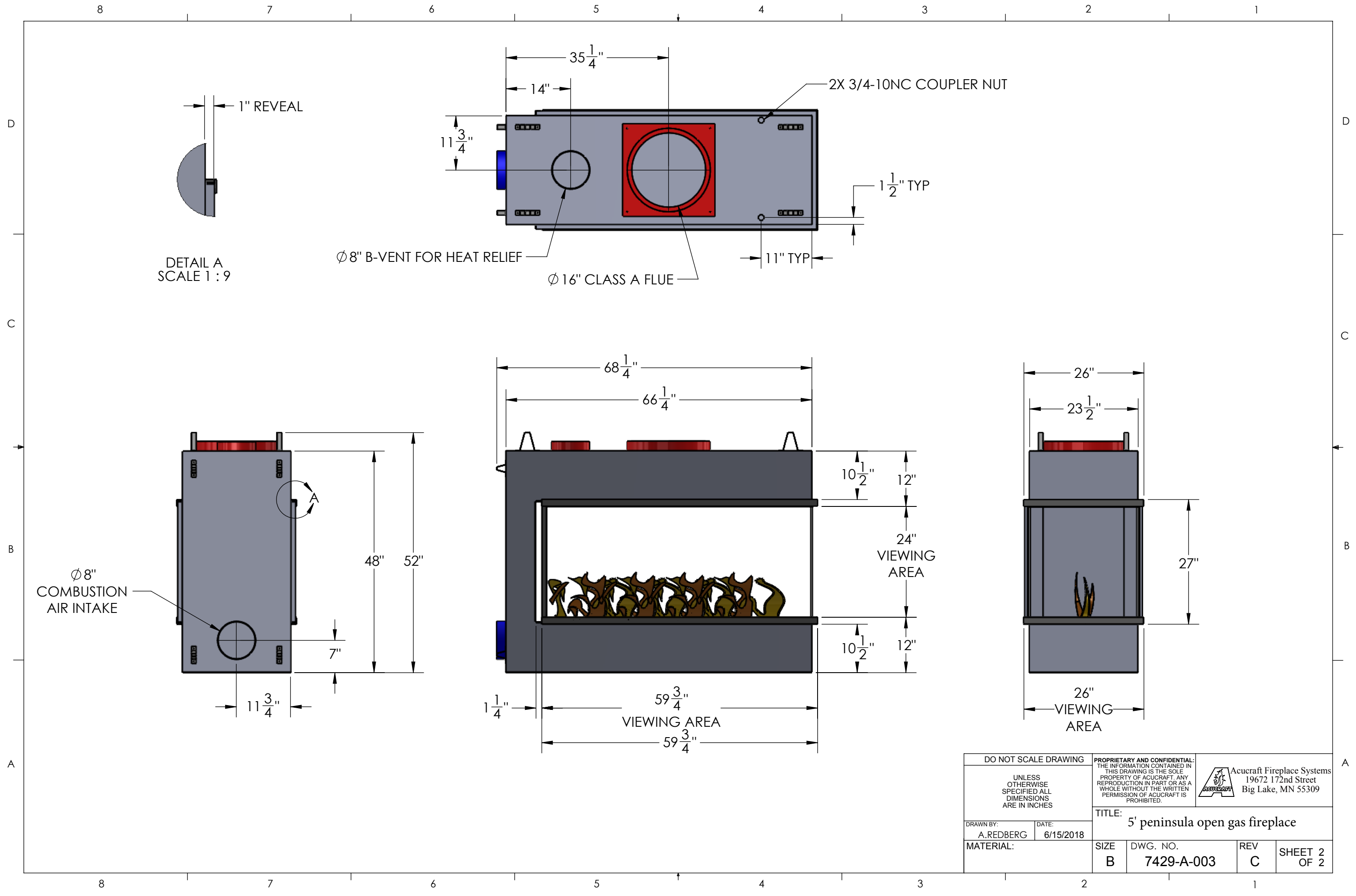
FIRESCREEN WITH 1/4" ROUND
CORNER SUPPORTS
(REMOVABLE FOR MAINTENANCE)


MESH TO BE COVERED WITH GLASS
MEDIA COLOR TO BE DETERMINED

48" BURNER

- NOTES:
- 1. ALL OVERALL DIMENSIONS +/- 1/4"
 - 2. FIREPLACE HOOD TO BE SUPPORTED FROM ABOVE AS SPECIFIED ON DRAWING.
 - 3. FINISH MATERIAL TO BE PROVIDED BY OTHERS
 - 4. APPROXIMATE BTU: 60,000
 - 5. GAS TYPE: NATURAL GAS
 - 6. GLASS TO BE INSTALLED BY OTHERS
 - 7. WILL SHIP WITH SUPPORTS
 - 8. SUPPORTS TO BE REMOVED ONCE FIREPLACE SUPPORTS ARE IN PLACE

DO NOT SCALE DRAWING		PROPRIETARY AND CONFIDENTIAL: THE INFORMATION CONTAINED IN THIS DRAWING IS THE SOLE PROPERTY OF ACUCRAFT. ANY REPRODUCTION IN PART OR AS A WHOLE WITHOUT THE WRITTEN PERMISSION OF ACUCRAFT IS PROHIBITED.		 Acucraft Fireplace Systems 19672 172nd Street Big Lake, MN 55309			
UNLESS OTHERWISE SPECIFIED ALL DIMENSIONS ARE IN INCHES							
DRAWN BY: A.REDBERG		DATE: 6/15/2018				TITLE: 5' peninsula open gas fireplace	
MATERIAL:		SIZE B	DWG. NO. 7429-A-003	REV C	SHEET 1 OF 2		



DO NOT SCALE DRAWING		PROPRIETARY AND CONFIDENTIAL: THE INFORMATION CONTAINED IN THIS DRAWING IS THE SOLE PROPERTY OF ACUCRAFT. ANY REPRODUCTION IN PART OR AS A WHOLE WITHOUT THE WRITTEN PERMISSION OF ACUCRAFT IS PROHIBITED.		 Acucraft Fireplace Systems 19672 172nd Street Big Lake, MN 55309	
UNLESS OTHERWISE SPECIFIED ALL DIMENSIONS ARE IN INCHES					
DRAWN BY: A. REDBERG		DATE: 6/15/2018		TITLE: 5' peninsula open gas fireplace	
MATERIAL:		SIZE B	DWG. NO. 7429-A-003	REV C	SHEET 2 OF 2