

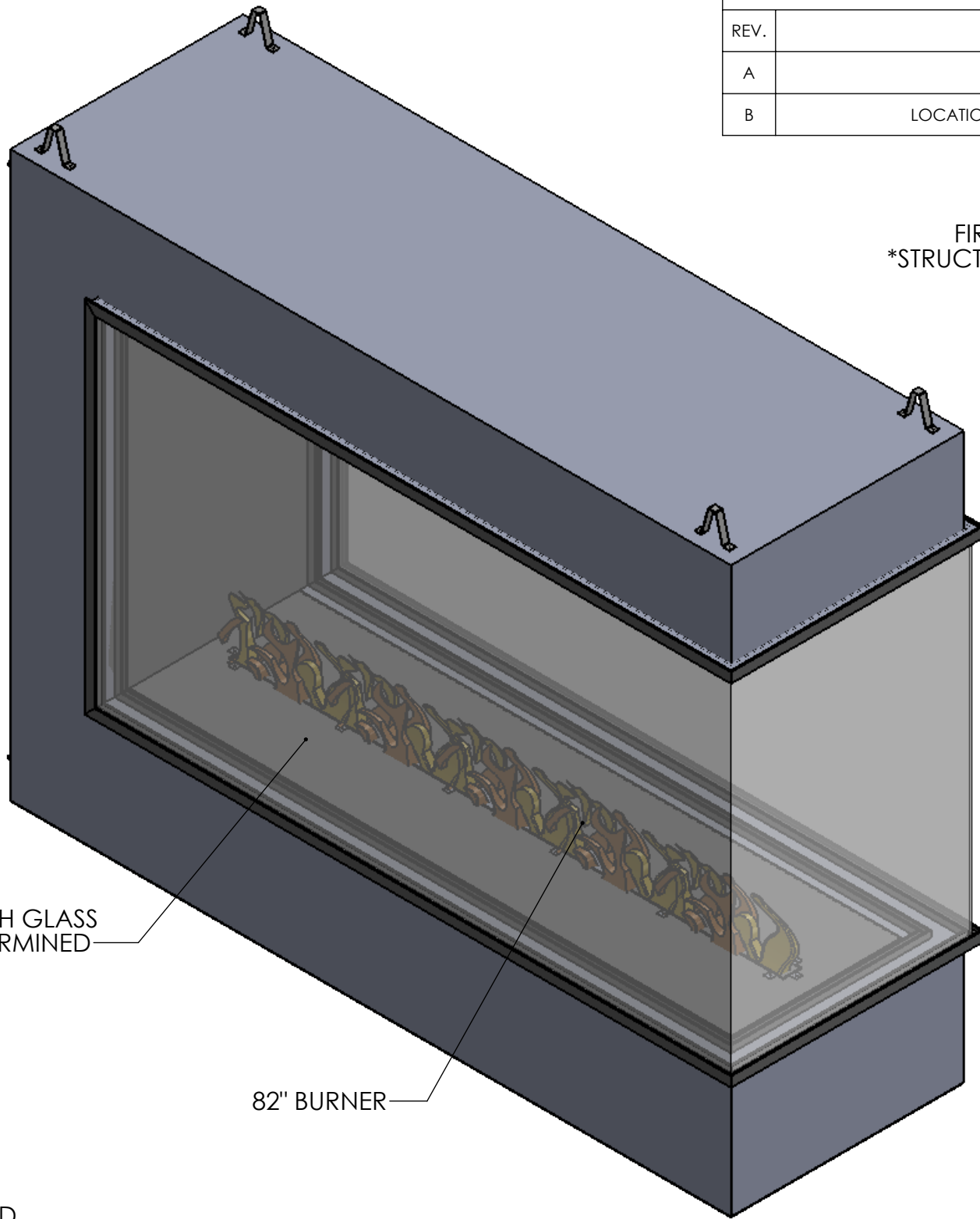
8 7 6 5 4 3 2 1

REVISIONS			
REV.	DESCRIPTION	ECO	DATE
A	INITIAL RELEASE	AR	5/11/2018
B	LOCATION OF SUPPORTS MOVED TO MIDDLE OF UNIT	RS	5/29/2018

FIREPLACE AS PROVIDED BY ACUCRAFT SHOWN  
 \*STRUCTURAL FRAME AND FINAL WRAP BY OTHERS HIDDEN\*

D  
C  
B  
A


D  
C  
B  
A



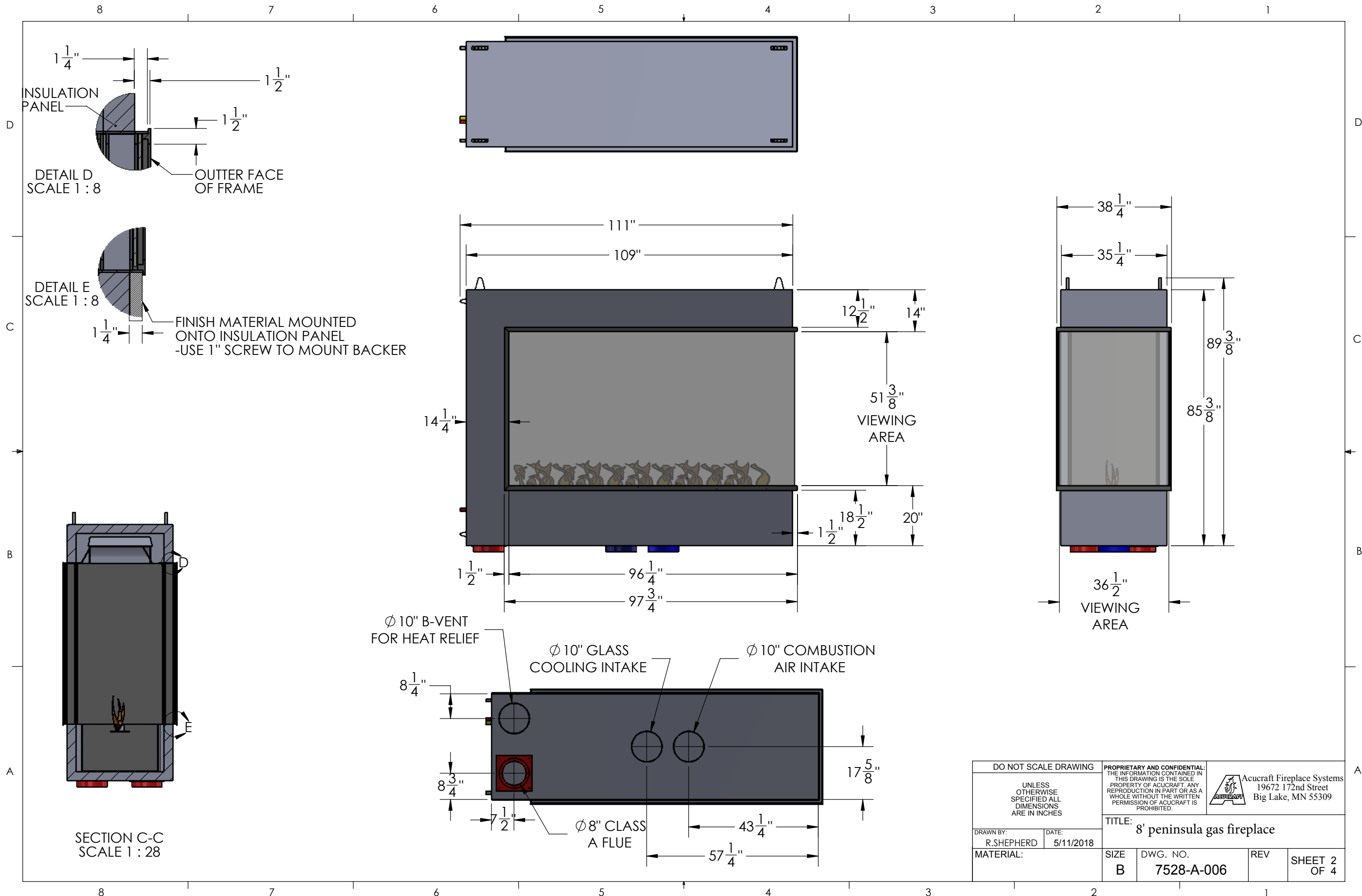
MESH TO BE COVERED WITH GLASS  
 MEDIA COLOR TO BE DETERMINED

82" BURNER

- NOTES:
1. ALL OVERALL DIMENSIONS +/- 1/4"
  2. FIREPLACE HOOD TO BE SUPPORTED FROM SIDES AND ABOVE AS SPECIFIED ON STRUCTURAL ENGINEER'S DRAWINGS.
  3. FINISH MATERIAL TO BE PROVIDED BY OTHERS
  4. APPROXIMATE BTU: 102,500
  5. GAS TYPE: NATURAL GAS
  6. GLASS TO BE INSTALLED BY OTHERS

DO NOT SCALE DRAWING		<small>PROPRIETARY AND CONFIDENTIAL:          THE INFORMATION CONTAINED IN THIS DRAWING IS THE SOLE PROPERTY OF ACUCRAFT. ANY REPRODUCTION IN PART OR AS A WHOLE WITHOUT THE WRITTEN PERMISSION OF ACUCRAFT IS PROHIBITED.</small>		 Acucraft Fireplace Systems 19672 172nd Street Big Lake, MN 55309
<small>UNLESS OTHERWISE SPECIFIED ALL DIMENSIONS ARE IN INCHES</small>		<small>TITLE:</small> <b>8' peninsula gas fireplace</b>		
<small>DRAWN BY:</small> R.SHEPHERD	<small>DATE:</small> 5/11/2018	<small>SIZE</small> B	<small>DWG. NO.</small> 7528-A-006	<small>REV</small> B
<small>MATERIAL:</small>		<small>SHEET</small> 1	<small>OF</small> 4	

8 7 6 5 4 3 2 1



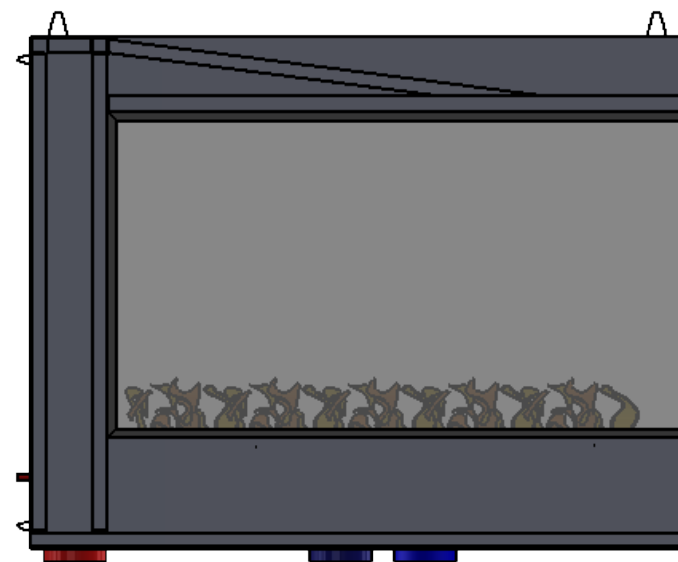
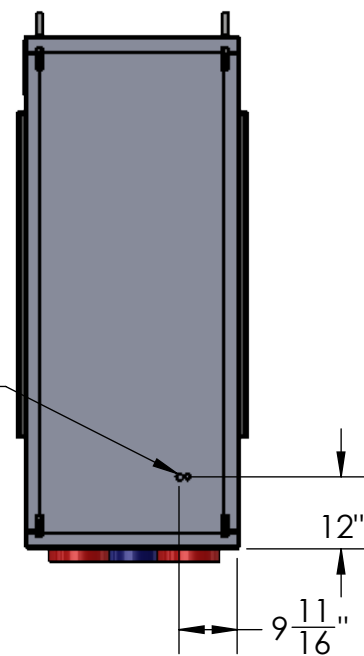
DO NOT SCALE DRAWING		PROPRIETARY AND CONFIDENTIAL: THE INFORMATION CONTAINED IN THIS DRAWING IS THE SOLE PROPERTY OF ACUCRAFT. ANY REPRODUCTION IN PART OR AS A WHOLE WITHOUT THE WRITTEN PERMISSION OF ACUCRAFT IS PROHIBITED.		Acucraft Fireplace Systems 19672 172nd Street Big Lake, MN 55309	
UNLESS OTHERWISE SPECIFIED ALL DIMENSIONS ARE IN INCHES		TITLE: <b>8' peninsula gas fireplace</b>			
DRAWN BY: R.SHEPHERD	DATE: 5/11/2018	SIZE B	DWG. NO. 7528-A-006	REV	SHEET 2 OF 4


8 7 6 5 4 3 2 1

D  
C  
B  
A

D  
C  
B  
A

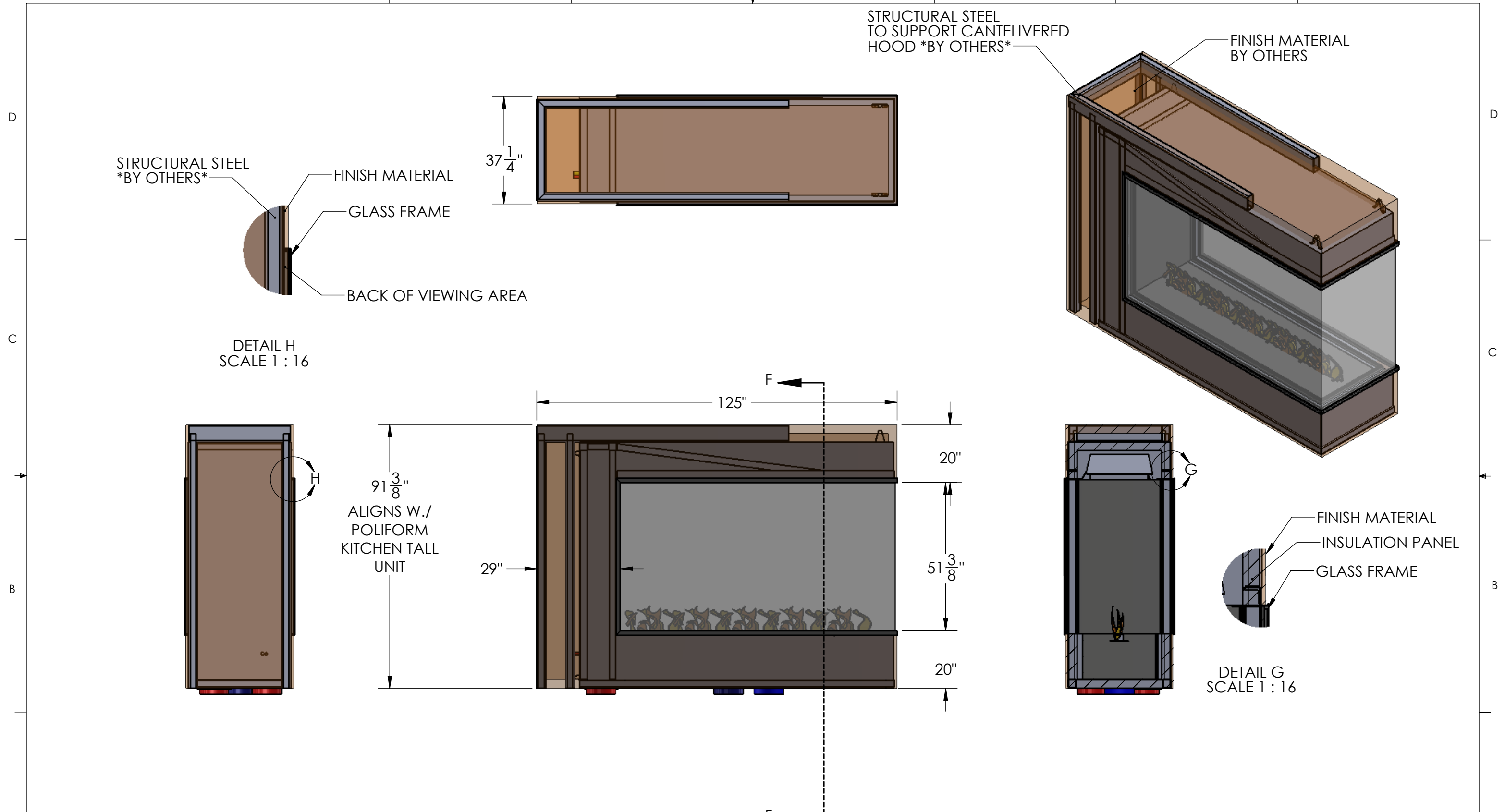
GAS AND ELECTRIC STUB OUTS



DO NOT SCALE DRAWING		PROPRIETARY AND CONFIDENTIAL: THE INFORMATION CONTAINED IN THIS DRAWING IS THE SOLE PROPERTY OF ACUCRAFT. ANY REPRODUCTION IN PART OR AS A WHOLE WITHOUT THE WRITTEN PERMISSION OF ACUCRAFT IS PROHIBITED.		 Acucraft Fireplace Systems 19672 172nd Street Big Lake, MN 55309	
UNLESS OTHERWISE SPECIFIED ALL DIMENSIONS ARE IN INCHES		TITLE: <b>8' peninsula gas fireplace</b>			
DRAWN BY:	DATE: 1/5/2018	SIZE <b>B</b>	DWG. NO. <b>7528-A-006</b>	REV	SHEET 3 OF 4
MATERIAL: Material <not specified>					

8 7 6 5 4 3 2 1

8 7 6 5 4 3 2 1



STRUCTURAL STEEL  
\*BY OTHERS\*

FINISH MATERIAL

GLASS FRAME

BACK OF VIEWING AREA

STRUCTURAL STEEL  
TO SUPPORT CANTELIVERED  
HOOD \*BY OTHERS\*


FINISH MATERIAL  
BY OTHERS

DETAIL H  
SCALE 1 : 16

DETAIL G  
SCALE 1 : 16

91 <sup>3</sup>/<sub>8</sub>"  
ALIGNS W./  
POLIFORM  
KITCHEN TALL  
UNIT

\*FINISH MATERIAL TO BE A NON-COMBUSTIBLE SUCH AS DUROCK\*

SECTION SCALE DRAWING		PROPRIETARY AND CONFIDENTIAL: THE INFORMATION CONTAINED IN THIS DRAWING IS THE SOLE PROPERTY OF ACUCRAFT. ANY REPRODUCTION IN PART OR AS A WHOLE WITHOUT THE WRITTEN PERMISSION OF ACUCRAFT IS PROHIBITED.		 Acucraft Fireplace Systems 19672 172nd Street Big Lake, MN 55309	
UNLESS OTHERWISE SPECIFIED ALL DIMENSIONS ARE IN INCHES		TITLE: <b>8' peninsula gas fireplace</b>			
DRAWN BY:	DATE: 1/5/2018	SIZE <b>B</b>	DWG. NO. <b>7528-A-006</b>	REV	SHEET 4 OF 4
MATERIAL: Material <not specified>					

8 7 6 5 4 3 2 1